

PUPPETRY IN COSPLAY AND COSTUMING

DeadLegato Anime Fusion

2023



WHY WOULD I WANT TO MAKE A PUPPET WHEN I COULD JUST MAKE A COSTUME?

Puppetry techniques can be used to enhance costumes, ie, articulated jaws in fursuits

Non-human shaped characters

Non-human sized characters

Appreciate bunraku and other puppet theater

Sensory issues (not everyone can fursuit!)

BUNRAKU: PUPPETRY IN TRADITIONAL JAPANESE THEATER

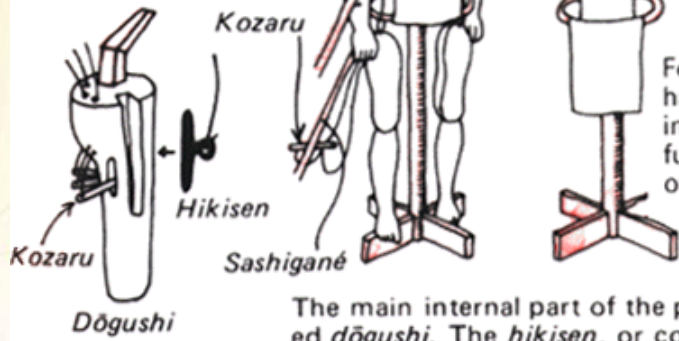


BUNRAKU: PUPPETRY IN TRADITIONAL JAPANESE THEATER



BUNRAKU: PUPPETRY IN TRADITIONAL JAPANESE THEATER

The puppet's wrists and fingers are moved by pulling on the handles, called *kozaru*, attached to the bar called *sashigané*.



Female puppets usually have no feet, and walking is indicated by skillful movement of the hem of the puppet's costume.

The main internal part of the puppet's body is called *dōgushi*. The *hikisen*, or cord, inside this moves the puppet's head, and the small *kozaru* handles move its eyes, mouth, and eyebrows.



Keisei:
Prostitute

There are various puppet heads for roles of different sex, age, character, etc; and the way the hair is arranged can show the character's position in life.



Wakaotoko:
Boy



Gabu

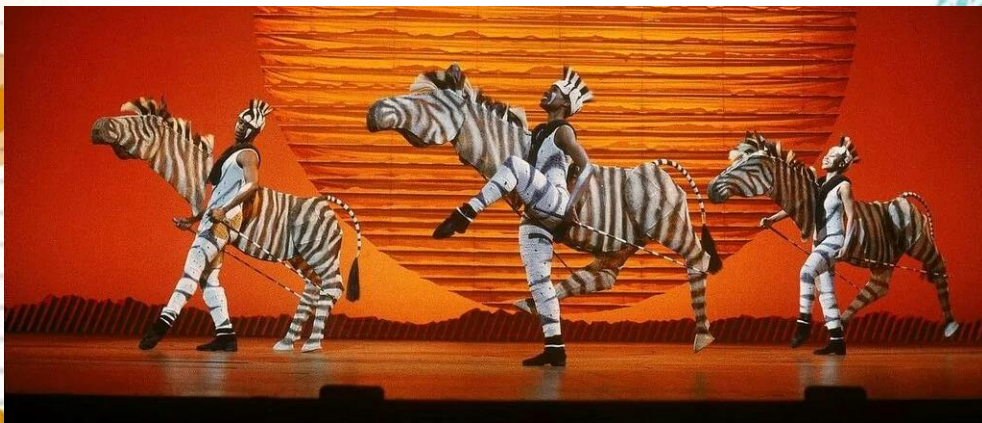
The face of a beautiful woman can be made to change suddenly into the face of a demon.



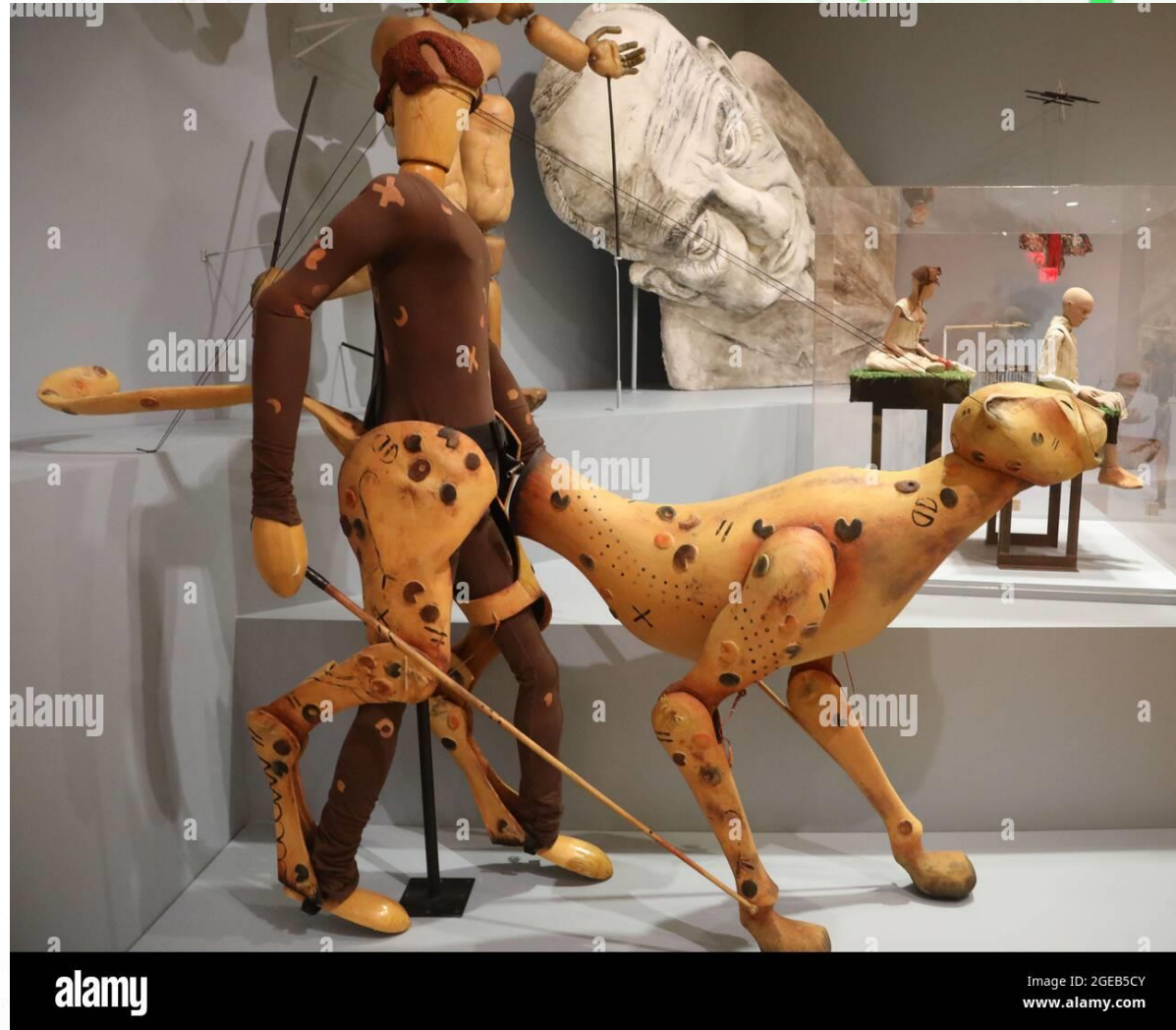
The puppeteers normally wear black costumes and black hoods, called *kuroko*, but occasionally the *omozukai* will appear in a hoodless *kimono*.

To become an accomplished *omozukai* has been said to take a total of thirty years; ten years as *ashizukai*, a further ten years as *hidarizukai*, and ten years as *omozukai*.

PUPPETRY IN MODERN THEATER



PUPPETRY IN MODERN THEATER



https://www.youtube.com/watch?v=nHVuGrp2eik&ab_channel=DisneyOnBroadway

<https://www.facebook.com/TheLionKingUSA/videos/cheetah-from-circle-of-life/578477335955137/>

PUPPETRY IN MODERN THEATER



18
FEET



TIFFANY ONG

PUPPETRY IN MODERN THEATER



PUPPETRY IN MODERN THEATER



COSTUMES THAT CROSS THE LINE BETWEEN PUPPET AND COSTUME



COSTUMES THAT CROSS THE LINE BETWEEN PUPPET AND COSTUME



COSTUMES THAT CROSS THE LINE BETWEEN PUPPET AND COSTUME

<https://blog.adafruit.com/2016/05/25/labyrinth-junk-lady-cosplay/>



EPBOT.com

EPBOT.com

EPBOT.com

COSTUMES THAT CROSS THE LINE BETWEEN PUPPET AND COSTUME

https://www.youtube.com/watch?v=YeyGisHA9kY&ab_channel=WillowCreative



COSTUMES THAT CROSS THE LINE BETWEEN PUPPET AND COSTUME



Spotted Sat at Anime Detour 2023

COSTUMES THAT CROSS THE LINE BETWEEN PUPPET AND COSTUME



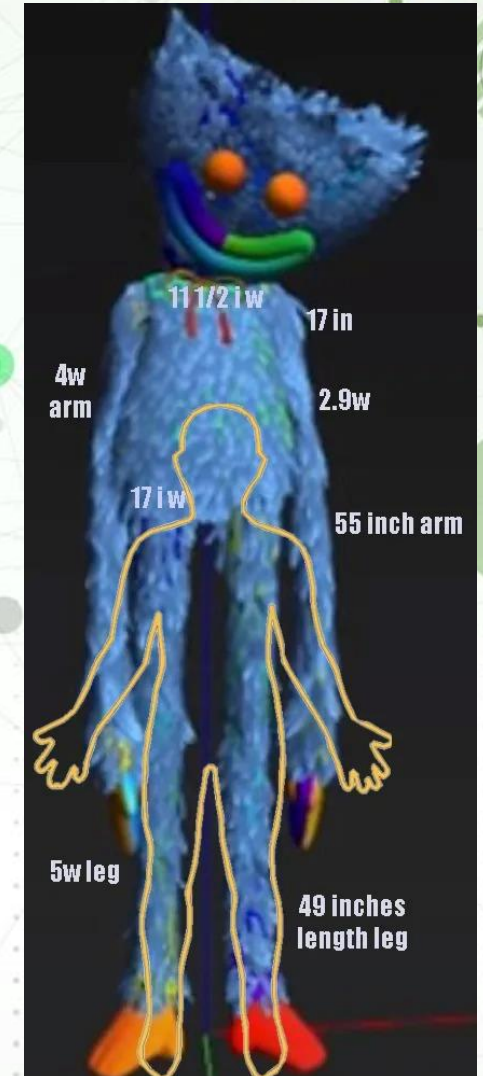
https://www.youtube.com/watch?v=rXnxrt4hjnE&list=PLEE2DED9747A5EA0D&index=7&ab_channel=CONvergenceMasquerade

COSTUMES THAT CROSS THE LINE BETWEEN PUPPET AND COSTUME



THINGS TO CONSIDER BEFORE YOU START YOUR PUPPET COSTUME

- Time, Money, and Skill: Pick any TWO
- SIZE, SIZE, SIZE!!!!
 - What does the event allow?
 - Transporting
- Your physical limitations
- How much help will you need?



4 diameter = 12.5 width

COMFORT AND WEARABILITY

Can you get in and out of the costume on your own?

For Huggy, the answer is “Sometimes”

For the Dalek, the answer is “NO”

How warm is it going to get?

How heavy is it?

What is my range of vision?

How am I going to move around the convention?

Can I eat, drink, and use the bathroom?

Will I need/have a spotter?

How long can I stay inside?

“SUPPORTING” YOUR HOBBY

Snare Drum
Harness
(Front Support)



A.L.I.C.E Pack
Frame
(Back Support)



Drywall Stilts
(Tall)



“SUPPORTING” YOUR HOBBY: DO NOT

Lack Care in your Surroundings



Unsupportive or new shoes*



Circus Stilts*



*Only for trained/practiced individuals

HOW SHOULD I GET STARTED?

Don't reinvent the wheel

There are many tutorials available on etsy and youtube

Someone has probably done something similar to what you want to do

HOW SHOULD I GET STARTED?

You can find tutorials for:

Moving jaw/articulated jaws

Moving wings

Stilt walker (4 legged Spirit Walker) plans on Etsy by Mel2Dassa

Hanari's multiple limbs tutorial:

<https://hanari502.tumblr.com/post/125235876340>

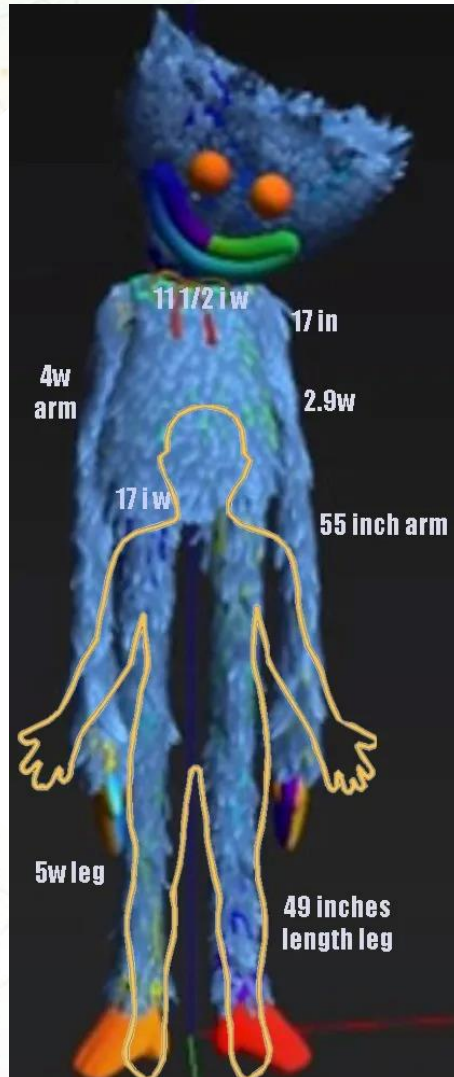
HOW SHOULD I GET STARTED?

REFERENCE IMAGES

Start breaking down the form into shapes you can reasonably build supports for

—

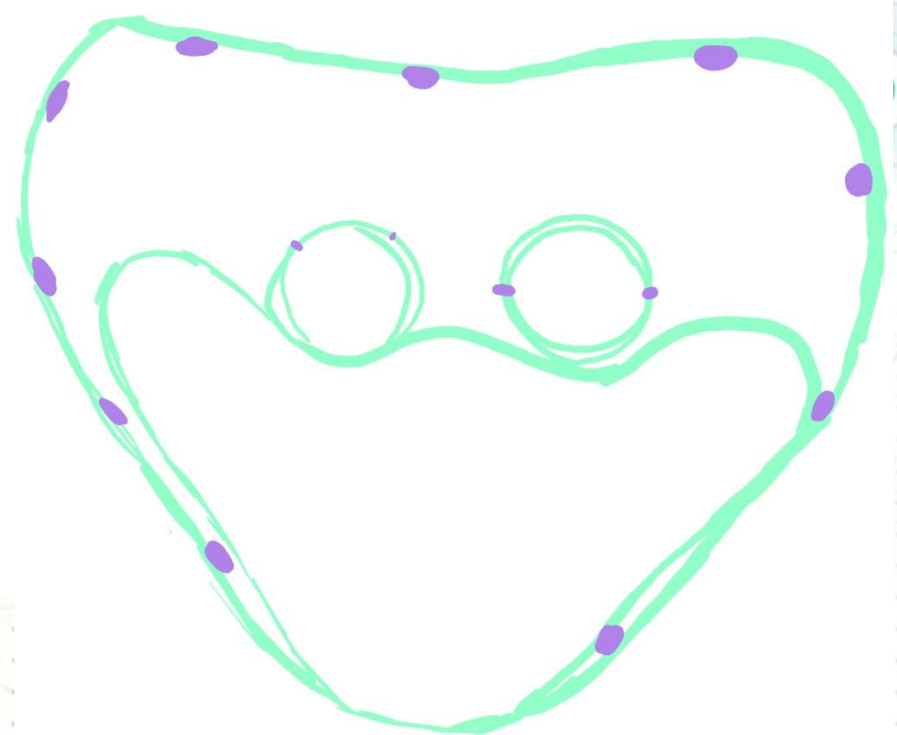
BUILDING HUGGY: SIZE, SIZE, SIZE



4 diameter = 12.5 width



BUILDING HUGGY: PROTOTYPING WITH PAPER



BUILDING HUGGY: GET CREATIVE

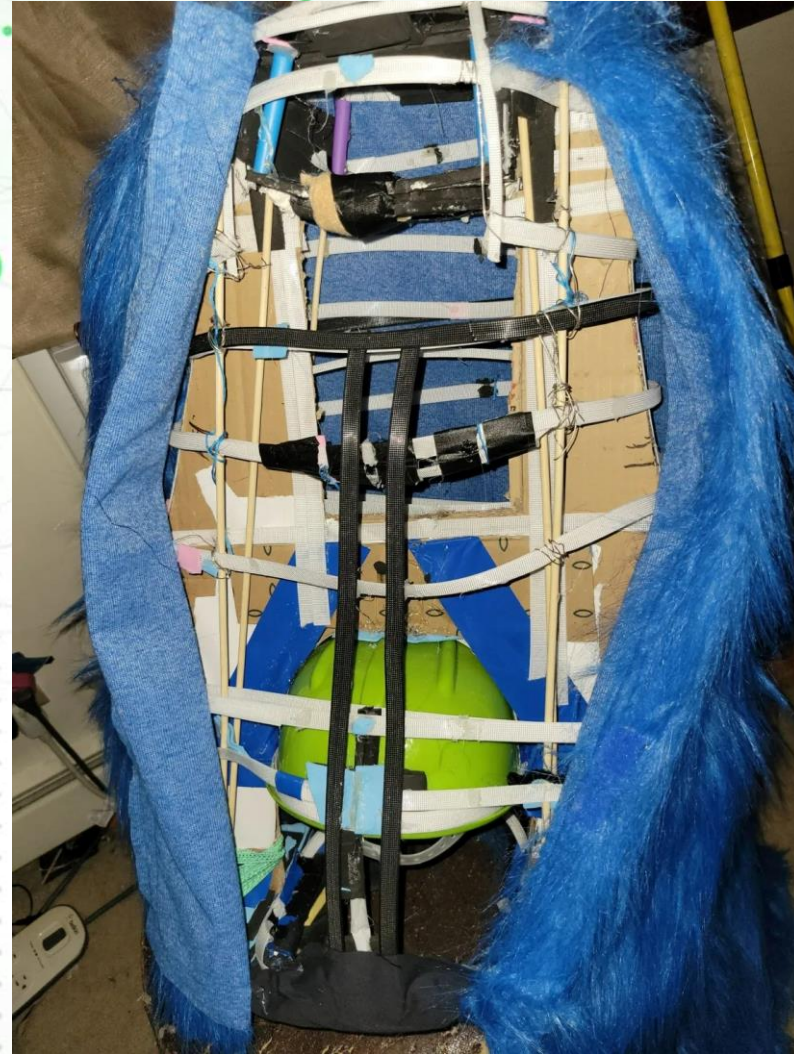


Teeth: Foam Christmas trees cut in half

Hot wheels trucks used to create rotation in the Dalek's head

Large doll joints- study how action figures are jointed (articulated)

BUILDING HUGGY: USE NEGATIVE SPACE TO REDUCE WEIGHT



BUILDING HUGGY: CONTROL



Acrylic curtain rods

Brake cable- preferable over string for moving parts since it can both push and pull (string can only pull)

Elastic

Ect

**YOUR PUPPETS DON'T HAVE TO BE ELABORATE TO
HAVE AN IMPACT!**

<https://youtu.be/v6JuOz-WHGc?list=PL533F5CCF60805A08&t=125>

—

LAST BUT NOT LEAST!

SURPRISE YOUR AUDIENCE

**DO NOT SURPRISE YOUR
MASQUERADE STAFF**

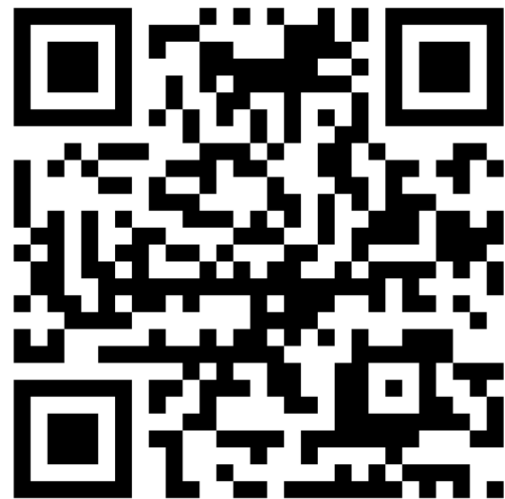
ASK QUESTIONS OR LET'S GET INSPIRED

https://www.youtube.com/watch?v=Vov3nnjL2zM&ab_channel=WFAA

https://www.youtube.com/watch?v=OGh7PEwE_ns&ab_channel=DaRegularSauce

https://www.youtube.com/watch?v=fF4ouove53w&ab_channel=WillowCreative

https://www.youtube.com/watch?v=qBXR15K2uSc&ab_channel=electricpig



Deadlegato.com